



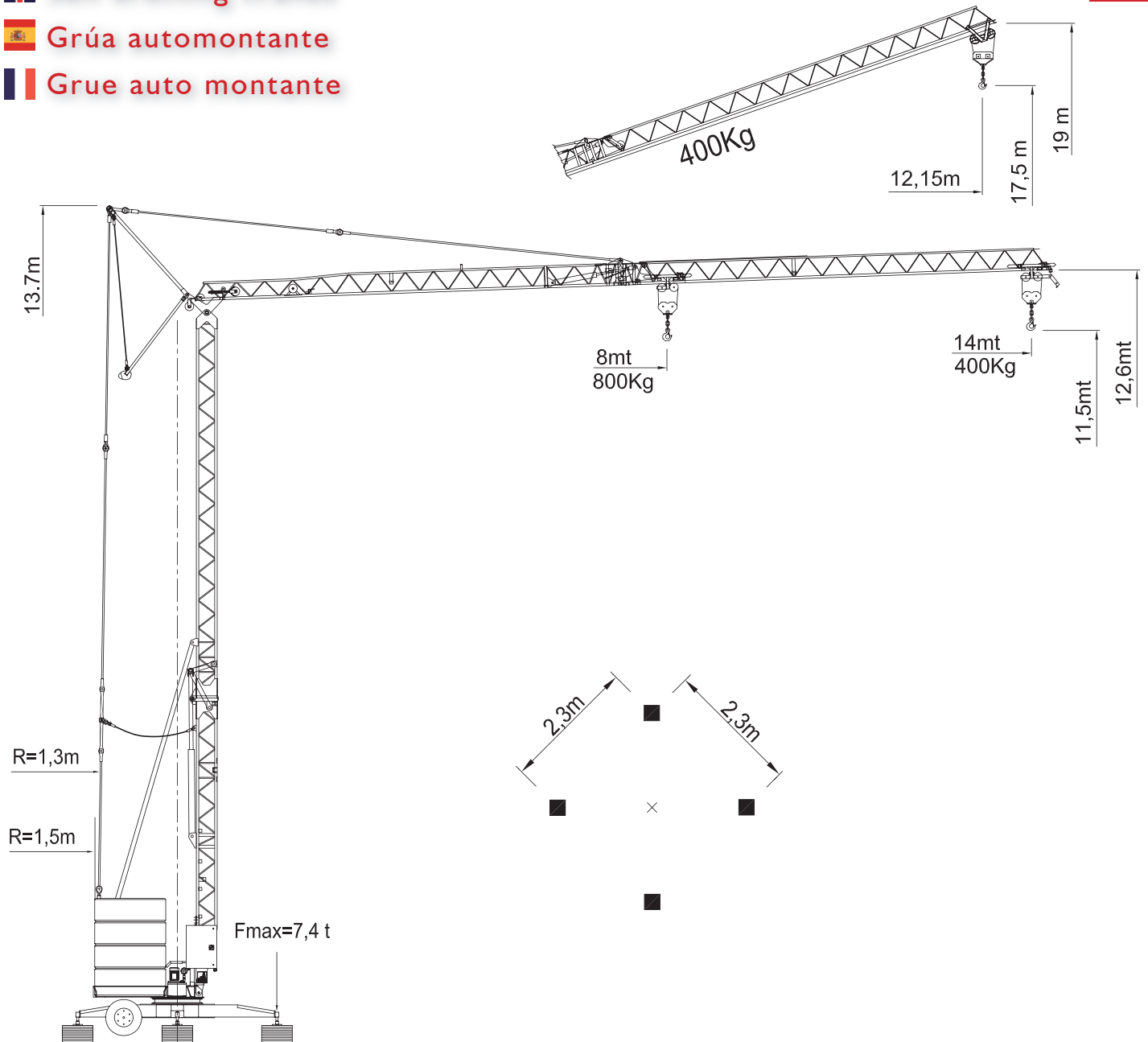








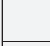
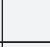



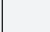
B14

GRU
Benedini
1958 - 2008

-  Gru Automontante
-  Self erecting cranes
-  Grúa automontante
-  Grue auto montante



CE FEM A4

			230v/50hz 3kW		400v/50hz 3kW		
			m/min	kg	m/min	kg	kW
Sollevamento Hoisting Levage Elevaciòn			4	800kg	4	800kg	2,2
			12		12		
			25	400kg	25	400kg	
Traslazione Trolleying Distribution Distribuciòn			27	800kg	27	800kg	0,6
			-		-		
			-	-	-	-	
Rotazione Slewing Orientation Orientaciòn			0,4 rpm	800kg	0,4 rpm	800kg	0,75
			0,9 rpm		0,9 rpm		
			-	-	-		

Alimentazione Elettrica Main Supply Rèseau Alimentaciòn	230v/50hz - 3kW 400v/50hz - 3kW
Montaggio Erection Montage Montaje	230v/50hz - 1,1kW 400v/50hz - 1,1kW
Peso Gru Crane Weight Poids Grue Peso Grúa	2650 kg
Zavorra Ballast lest Lastre	6000 kg

B14

-  Montaggio
-  Erection
-  Montaje
-  Montage



Apertura aerea idraulica del braccio
Carro gommato con 6 ruote per traino
Una velocità carrello
Tre velocità di sollevamento con rampa di accelerazione e decelerazione pilotate da inverter
Due velocità di rotazione con rampa di accelerazione e decelerazione pilotate da inverter.
Finercorsa di rotazione.
Zincatura: torre, braccio, tiranti, cuspidi, funi, perni.
Cofano apparecchiatura elettrica in acciaio inox
Pulsantiera comandi
Benna tronco conica.
Funzionamento mono/trifase con adattamento automatico dei motori e delle apparecchiatura elettrica alla tensione di alimentazione: 220 volt monofase - 380 volt trifase.
Impennaggio braccio con carrello traslante con portata costante kg. 400.
Radiocomando a pulsantiera.
Sistema di teleassistenza.



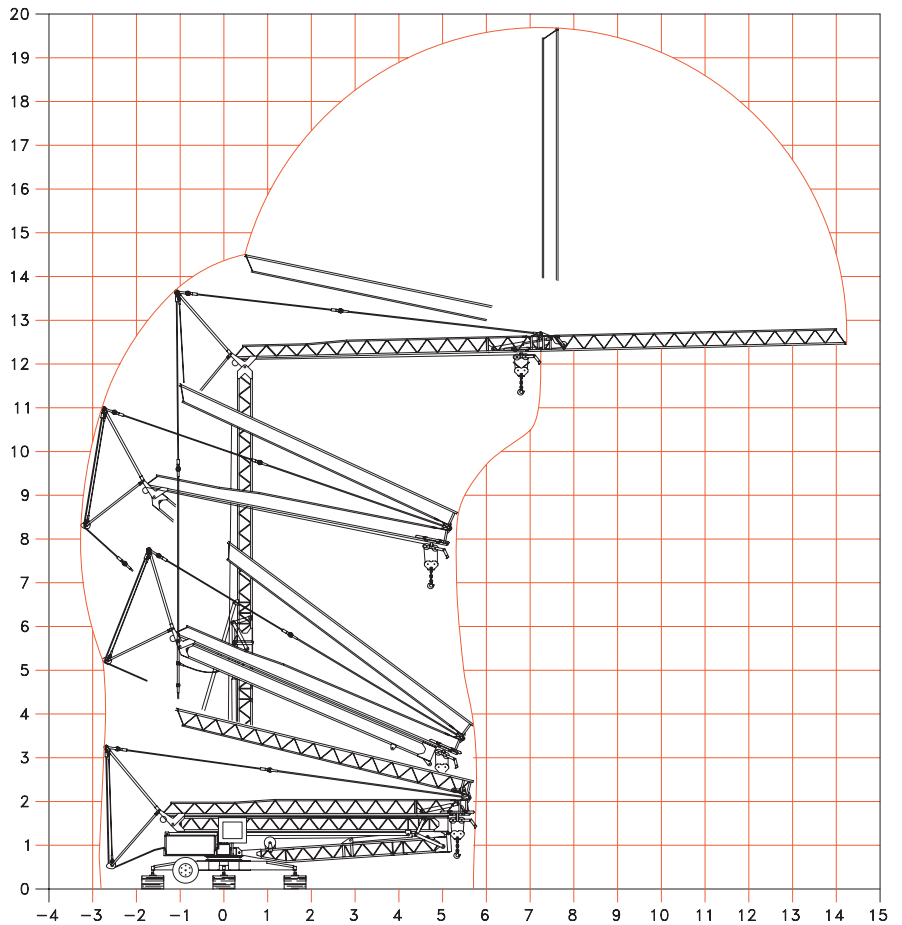
Hydraulic air opening of the jib.
Tyred truck with 6 wheels for towing.
One speed trolley.
Three lifting speeds with acceleration and deceleration ramp controlled by inverter.
Two rotation speeds with acceleration and deceleration ramp controlled by inverter.
Rotation limit switch.
Galvanising: tower, jibs, tie rods, struts, cables, pivots.
Casing for electric equipment in stainless steel.
Push-button keyboard.
Truncated cone bucket.
Single/three phase operation with automatic adaptation of the motors and the electrical equipment to the power voltage: 220 v single phase - 380 v three phase.
Inclined jib with traversing trolley with constant capacity 400 kg.
Wireless button keyboard.
Tele-assistance system.



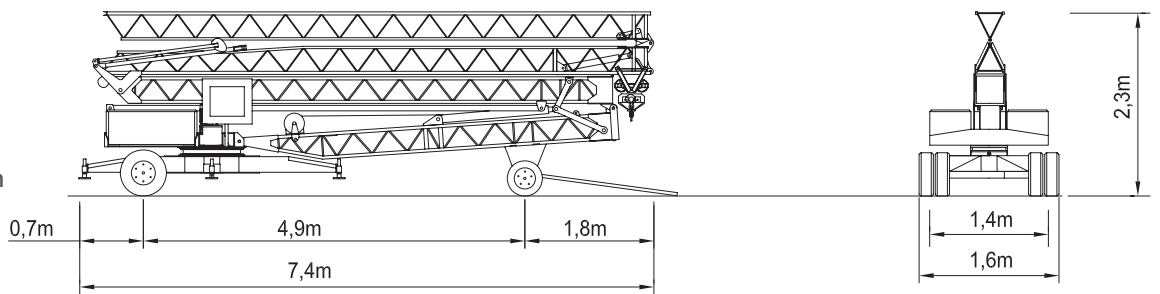
Despliegue hidráulico aéreo de la pluma.
Chasis de 6 ruedas para remolque.
Carrito a velocidad única.
Tres velocidades de elevación con rampa de aceleración y desaceleración controladas por inverter.
Dos velocidades de giro con rampa de aceleración y desaceleración controladas por inverter.
Limitadores de giro.
Cincado: torre, plumas, tirantes, cúspides, cables, pernos.
Armario equipo eléctrico en acero inoxidable
Botonera de mando.
Cubilote.
Funcionamiento monofásico con ajuste automático de los motores y del equipo eléctrico a la tensión de alimentación: 220 volt monofásica - 380 volt trifásica.
Izado pluma con carro de traslación de carga constante de 400 kg.
Radiocontrol de botonera de mando.
Sistema de tele-asistencia.



Dépliage hydraulique aérien de la flèche.
Châssis mobile à 6 roues pour remorque.
Une vitesse du chariot.
Trois vitesses de levage avec rampe d'accélération et de décélération commandées par inverseur.
Deux vitesses de rotation avec rampe d'accélération et de décélération commandées par inverseur.
Butée de rotation.
Zingage: tour, flèches, tirants, têtes, câbles, pivots.
Capot en acier inoxydable pour appareillage électrique.
Boîtier de commande.
Benne a beton.
Fonctionnement en mono-triphasé avec régulation automatique des moteurs et de l'appareillage électrique à la tension d'alimentation : 220 volt monophasé - 380 volt triphasé.
Empennage de la flèche avec chariot translateur à capacité constante de 400 kg.
Télécommande radio à boutons.
Système de télé-assistance.



-  Trasporto
-  Transportation
-  Transporte
-  Transport



Rivenditore / Reseller / Minorista / Détaillant

GRU
Benedini

Via Circonvallazione Est, 29
46047 Porto Mantovano MN - ITALY
Tel. +39 0376 389611
Fax +39 0376 389630
www.grubenedini.it info@grubenedini.it