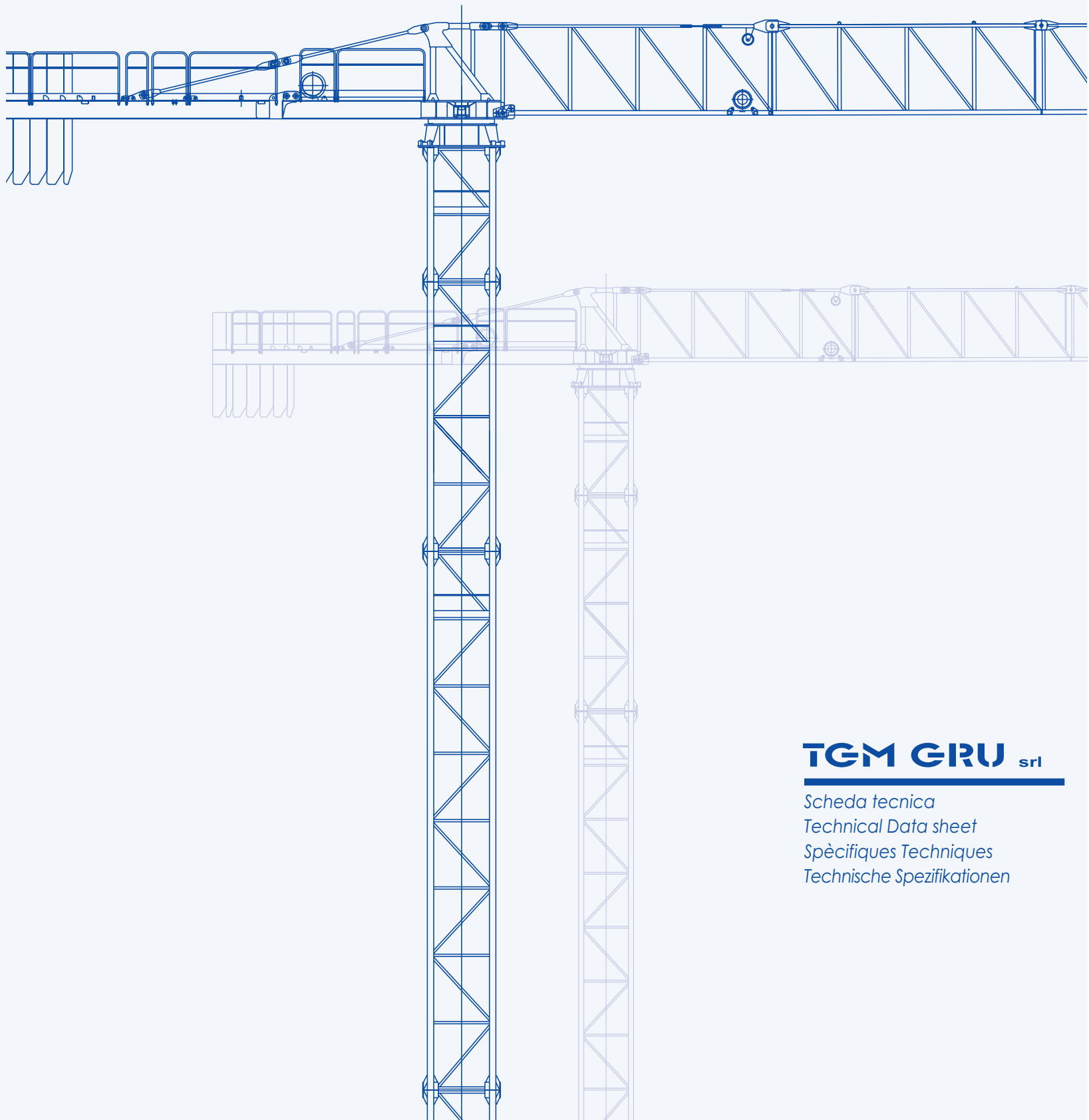




GRU A TORRE "TOPLESS"
"TOPLESS" CITY CRANE

GRT66



TGM GRU srl

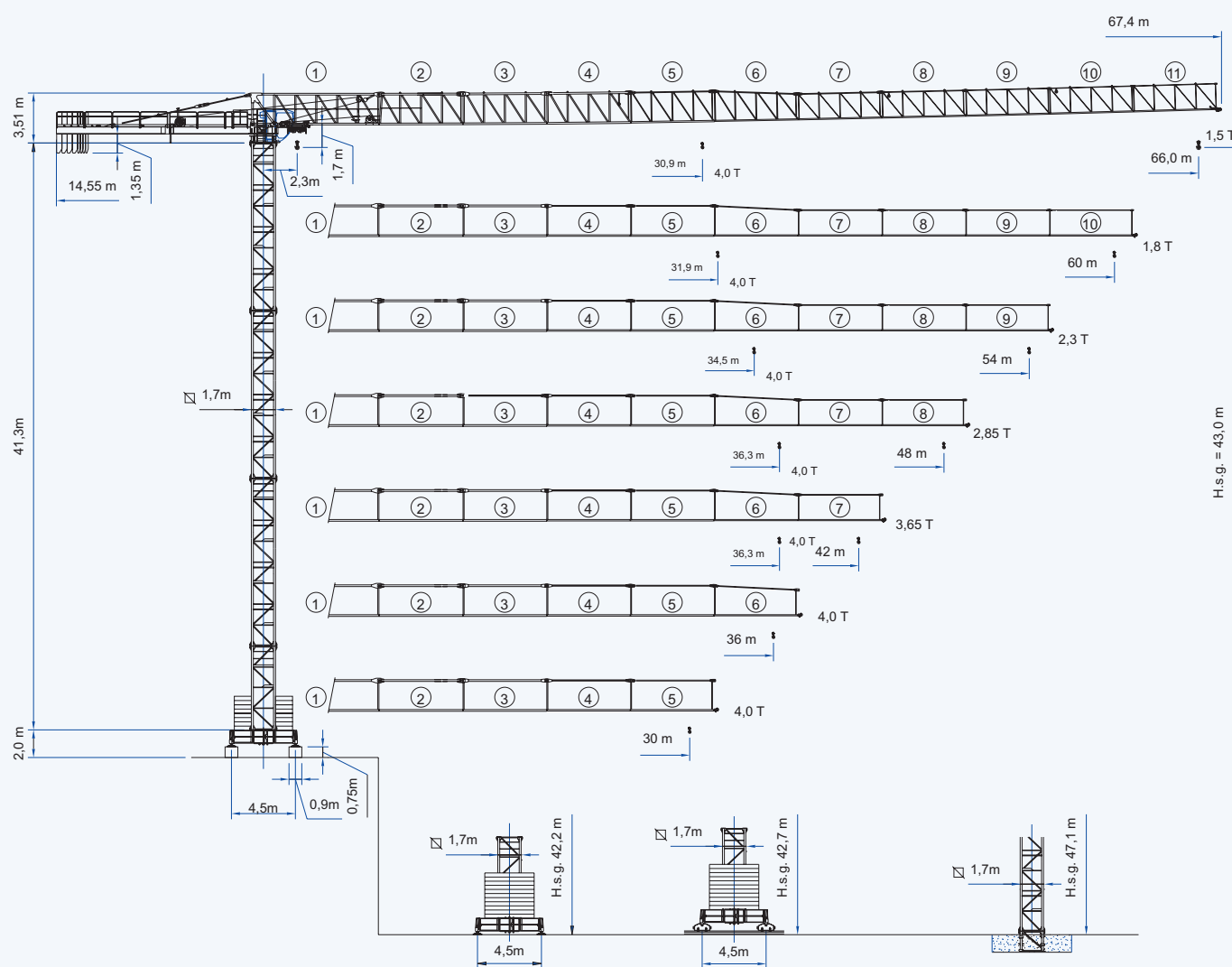
Scheda tecnica
Technical Data sheet
Spécifiques Techniques
Technische Spezifikationen

GRT66

GRU A TORRE "TOPLESS"
"TOPLESS" CITY CRANE



CE - 
FEM 1,001 A3

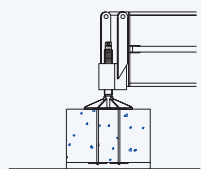


B 1

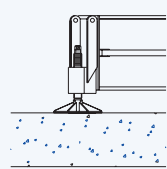
B 2

B 3

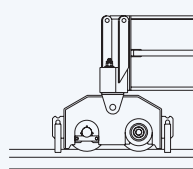
T 4



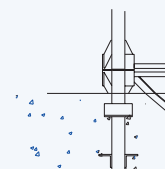
B 1



B 2



B 3



T 4

Dati illustrativi non impegnativi
Con riserva di modifica
senza preavviso

Specifications and data
not binding
Subject to modification without notice

Angaben und Beschreibung
unverbindlich
Änderungen vorbehalten ohne weitere
Mitteilung

Données techniques seulement
indicatives
Modifications réservées sans préavis

CURVE DI CARICO

CARGO CURVES LOAD DIAGRAMS COURBES DE CHARGES

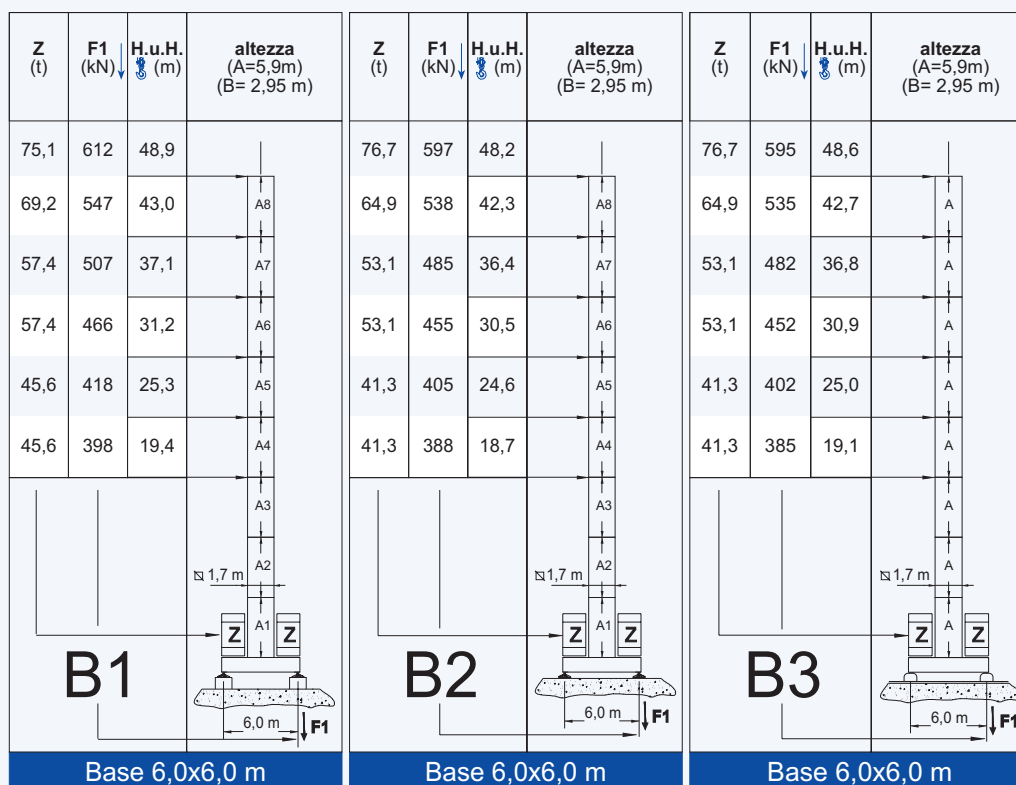
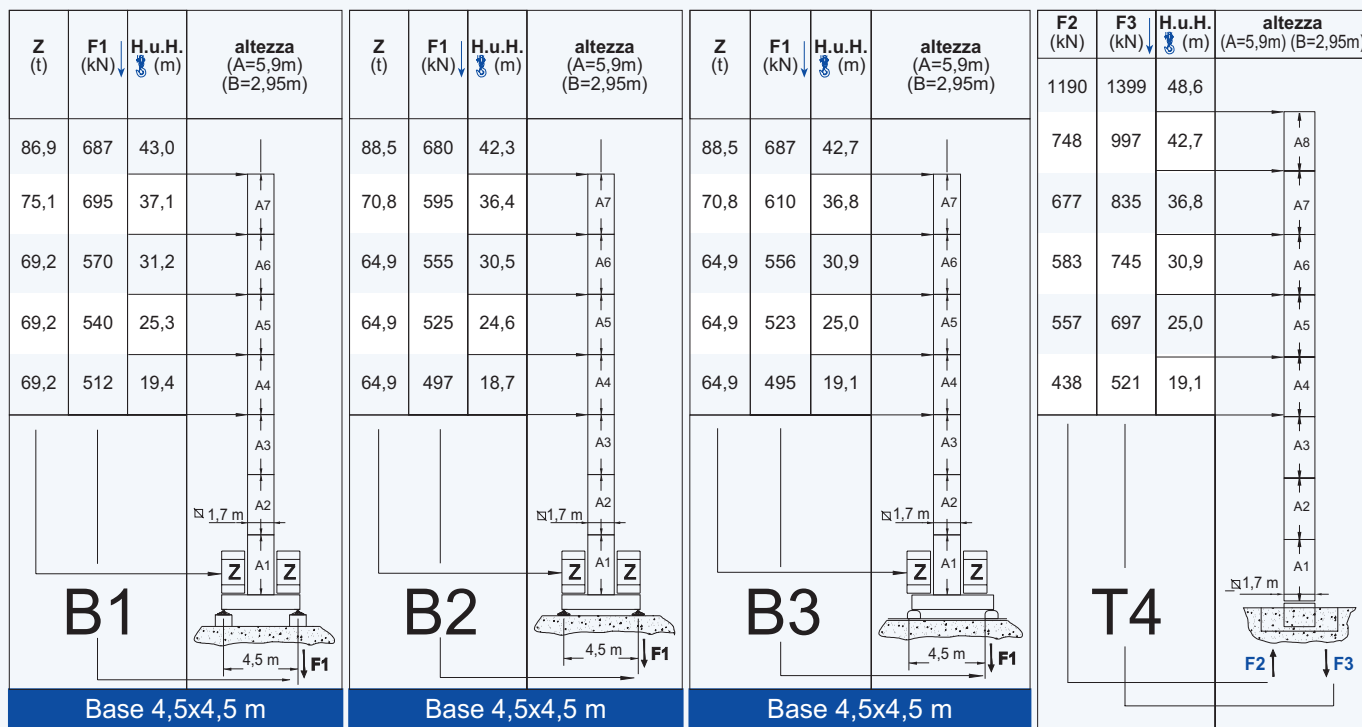
m.	Portata max - Max s.w.l. - Charge maxi																			4,0 t								
66	16	18	20	22	24	26	28	30,9	32	34	36	38	40	42	44	46	48	50	52	54	56	58	60	62	64	66	m.	
	4,00	4,00	4,00	4,00	4,00	4,00	4,00	4,00	4,00	3,84	3,57	3,33	3,11	2,92	2,75	2,59	2,45	2,31	2,19	2,08	1,98	1,88	1,80	1,71	1,64	1,56	1,50	t
60	16	18	20	22	24	26	28	31,9	32	34	36	38	40	42	44	46	48	50	52	54	56	58	60	m.				
	4,00	4,00	4,00	4,00	4,00	4,00	4,00	4,00	4,00	3,99	3,71	3,46	3,24	3,04	2,87	2,70	2,55	2,42	2,29	2,18	2,07	1,97	1,88	1,80	t			
54	16	18	20	22	24	26	28	30	32	34,5	36	38	40	42	44	46	48	50	52	54	m.							
	4,00	4,00	4,00	4,00	4,00	4,00	4,00	4,00	4,00	4,00	4,00	3,80	3,56	3,35	3,15	2,89	2,82	2,67	2,54	2,41	2,30	t						
48	16	18	20	22	24	26	28	30	32	34	36,3	38	40	42	44	46	48	m.										
	4,00	4,00	4,00	4,00	4,00	4,00	4,00	4,00	4,00	4,00	4,00	3,79	3,56	3,35	3,17	3,00	2,85	t										
42	16	18	20	22	24	26	28	30	32	34	36	38,9	40	42	m.													
	4,00	4,00	4,00	4,00	4,00	4,00	4,00	4,00	4,00	4,00	4,00	4,00	3,86	3,65	t													
36	16	18	20	22	24	26	28	30	32	34	36	m.																
	4,00	4,00	4,00	4,00	4,00	4,00	4,00	4,00	4,00	4,00	4,00	t																

m.	Portata max - Max s.w.l. - Charge maxi																			8,0 t		4,0 t					
66	16,8	18	20	22	24	26	28	30	32	34	36	38	40	42	44	46	48	50	52	54	56	58	60	62	64	66	m.
	8,00	7,39	6,54	5,85	5,28	4,80	4,40	4,00	3,74	3,47	3,23	3,01	2,82	2,65	2,49	2,35	2,21	2,09	1,98	1,88	1,78	1,70	1,61	1,54	1,46	1,40	t
60	17,4	18	20	22	24	26	28	30	32	34	36	38	40	42	44	46	48	50	52	54	56	58	60	m.			
	8,00	7,67	6,79	6,08	5,49	5,00	4,57	4,21	3,89	3,61	3,36	3,14	2,94	2,77	2,60	2,45	2,32	2,19	2,08	1,97	1,87	1,78	1,70	t			
54	18,7	20	22	24	26	28	30	32	34	36	38	40	42	44	46	48	50	52	54	m.							
	8,00	7,41	6,64	6,01	5,47	5,01	4,62	4,27	3,97	3,70	3,46	3,25	3,05	2,88	2,72	2,57	2,44	2,31	2,20	t							
48	19,6	20	22	24	26	28	30	32	34	36	38	40	42	44	46	48	m.										
	8,00	7,84	7,03	6,36	5,80	5,32	4,90	4,54	4,22	3,94	3,69	3,46	3,25	3,07	2,90	2,75	t										
42	21	22	24	26	28	30	32	34	36	38	40	42	m.														
	8,00	7,60	6,88	6,27	5,76	5,31	4,92	4,58	4,28	4,01	3,76	3,55	t														
36	21,7	22	24	26	28	30	32	34	36	m.																	
	8,00	7,87	7,13	6,51	5,97	5,51	5,11	4,76	4,45	t																	




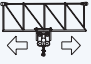

TORRE/REAZIONI

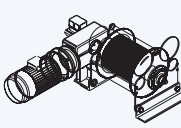



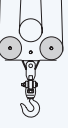
MAT RÉACTIONS MASTE/ECKDRÜCKE MAST/REACTIONS MÁSTIL/REACCIONES TRAMO/REACÇÕES



MECCANISMI

MÈCANISMES ANTRIEBE MECHANISMS MECANISMOS

	giri/min	m/min	Nm	Kw
	0,67	-	2 x 65	-
	-	0 - 70	-	5,5
	-	16	-	2 x 3

				marcia - step vitesse - gang				
	CV - ch PS - hp	KW			m	m/min	(t)	m/min
22 FV4 40	30	22,2	270	1	0-26	4,0	0-13	8,0
				2	0-35	3,0	0-17,5	6,0
				3	0-44	2,4	0-22	4,8
				4	0-64	1,75	0-34	3,5
30 FV4 40	40	30	400	1	0-36	4,0	0-18	8,0
				2	0-47	3,0	0-23,5	6,0
				3	0-61	2,4	0-30,5	4,8
				4	0-80	1,75	0-40	3,5
40 FV5 40	54	40	400 670* (Lebus)	1	0-4	4,0	0-2	8,0
				2	0-45	4,0	0-2,5	8,0
				3	0-62	3,0	0-31	6,0
				4	0-77	2,4	0-38,5	4,8
				5	0-100	1,75	0-50	3,5

(*)Consultateci

Potenza totale richiesta Total installed power Puissance totale nécessaire Geforderte Stromstärke Potencia necesaria	22 FV4 40 - 60 kVA	400 V - 50 Hz
	30 FV4 40 - 70 kVA	
	40 FV5 40 - 98 kVA	



PESI ED INGOMBRI

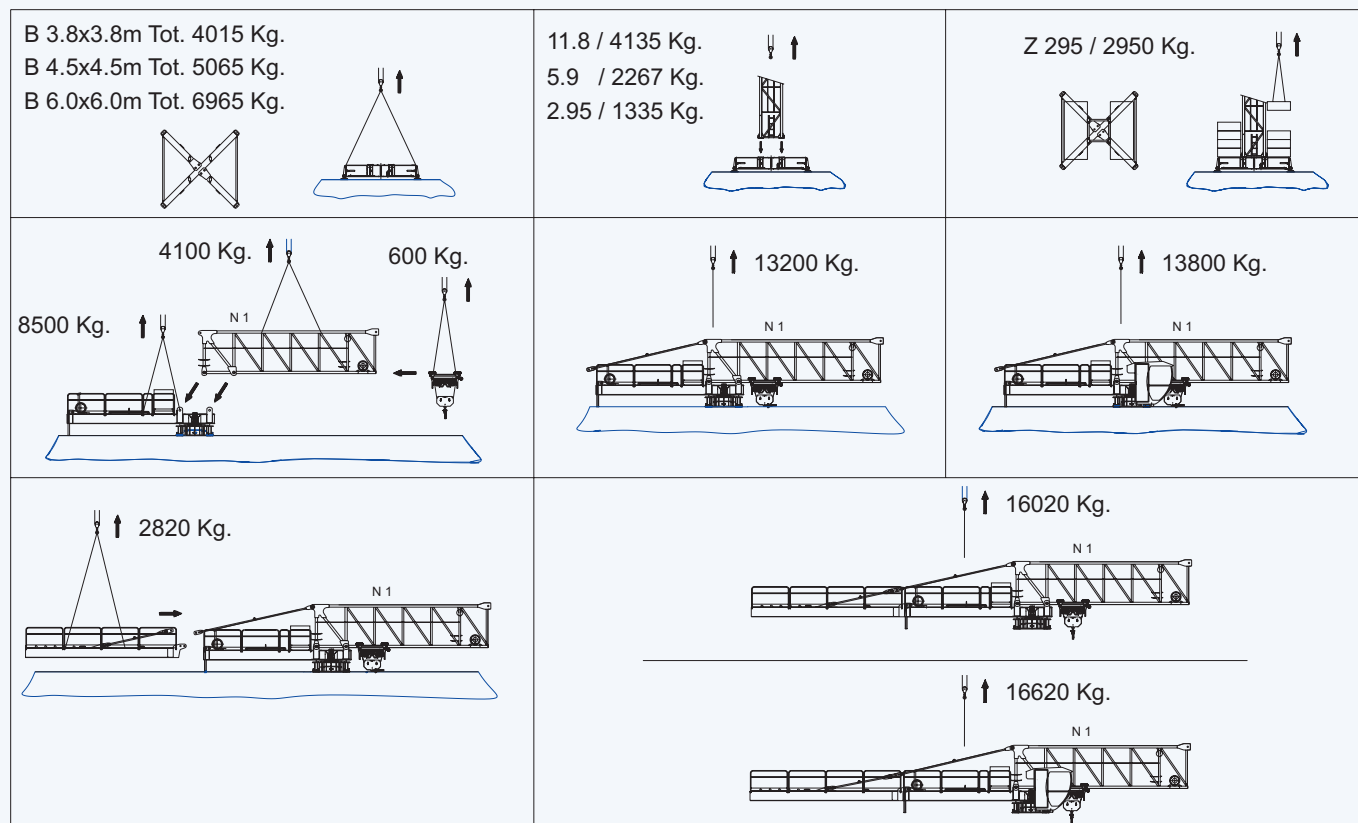
PACKING LIST LISTE DE COLISAGE KOLLI-LISTE

Pos. Item	Pezzi Pieces	Denominazione Description	Schizzo Sketch	Dimensioni Dimensions			Peso Weight (Kg)	
				L	W	H	Unit.	Total.
1	1	Elemento di freccia Jib element Elément de flèche Ausleger	N 1	9.360	1.175	2.340	*	4100
	1		N 2	6.155	1.150	2.315	*	1460
	1		N 3	6.170	1.150	2.300	*	1015
	1		N 4	6.140	1.150	2.300	*	850
	1		N 5	6.110	1.150	2.250	*	690
	1		N 6	6.105	1.150	2.230	*	630
	1		N 7	6.080	1.150	1.900	*	440
	1		N 8	6.080	1.150	1.890	*	400
	1		N 9	6.040	1.150	1.885	*	375
	1		N 10	6.005	1.150	1.870	*	340
	1		N 11	6.005	1.150	1.870	*	330
2	Freccia Flèche Ausleger Jib		66 m 60 m 54 m 48 m 42 m 36 m 30 m	59.4 53.6 47.7 41.8 36.0 30.0 24.2	1.175 1.175 1.175 1.175 1.175 1.175 1.175	2.615 2.615 2.615 2.615 2.615 2.615 2.615	*	6530 6200 5860 5485 5085 4645 4015
3	1	Controfreccia girevole, argano sollev., quadro elettrico, cuspidi. Counterjib-turntable, hoisting winch, trolley jib, electrical box, a frame. Contreflèche tournante, treuil de levage, armoire électrique, pointe. Gegenausleger, Hubwinde, Drehwerk Schaltschrank.		7.660	2.00	2.38	*	8500
4	1	Elemento controfreccia esterno. External counterjib. Contreflèche extÉrieure. Externes gegenausleger.		8.340	1.570	1.435	*	2860
5	1	Porta-cabina, cabina etc. Service and, access balcony, cabin etc. Plateforme tournante, cabine. Kabinepodest, Kabine.		3.100	2.36	1.95	*	600
6	1 6	Blocchi di contrappeso Counterweight block Contre-poids Gegengewichtsbloecke		A 125 3.000 B 250 3.000	0.185 0.370	1.200 1.200	*	1250 15000

*(Unit = Total)

Pos. Item	Pezzi Pieces	Denominazione Description	Schizzo Sketch	Dimensioni Dimensions			Peso Weight (Kg)			
				L	W	H	Unit.	Total.		
7	1	Elemento di torre Tower element Elément de mât Turmstück			11.8	1.7	1.9	*	4135	
					5.9	1.7	1.9	*	2267	
					2.95	1.7	1.9	*	1335	
					1.465	1.98	1.98	*	830	
8	1	TRAVE DI BASE PRINCIPALE BASE MAIN BEAM POUTRE DE CHASSIS DE BASE			3,8x3,8mt	5,534	0,780	0,870	2005	-
					4,5x4,5mt	6,524	0,780	0,960	2595	-
					6,0x6,0mt	8,645	0,780	0,960	3475	-
9	1	SEMI-TRAVE DI BASE HALF BASE BEAM SEMIPOUTRE DE CHASSIS DE BASE			3,8x3,8mt	2,712	0,680	0,875	1005	2010
					4,5x4,5mt	3,212	0,680	0,974	1235	2470
					6,0x6,0mt	4,323	0,680	0,974	1745	3490
10	2	BILANCINO DI TRASLAZ. FOLLE DRIVEN BOIGE BOGGIE FOU			1.16	0.25	0.503	455	960	
11	2	BILANCINO DI TRASLAZ. MOTORIZ. BOGGIE MOTORISEE DRIVING BOIGE			1.16	0.59	0.503	680	1360	
12	30	Blocco di zavorra Base ballast block Lest de base Grundballastblöcken (Z 295)			3.600	0.600	1.200	2950	88500	
13	4	Blocco di appoggio Concrete pad Sabot en béton Betonfuss (BA 3)			3,600	0,900	0,750	5520	22080	

*(Unit = Total)



T.G.M. by Top Gru Machine S.r.l.

Sede legale: Via Baraggia 9, ang. SP.28 -22100- Albate (CO) Tel +39 031 594751 Fax +39 031 520815
Unità produttiva: Via Piccinelli,2 -22076- Mozzate (CO) Tel +39 0331 837266 Fax +39 0331 688063
c.f./p.iva/Reg. Impr. Como 03290830136 cap. soc. €100.000,00 i.v. REA CO n. 306478
www.tgmgru.com info@tgmgru.com

SOPRALZO IDRAULICO versione HC - 210

EXTERNAL CLIMBING KLETTERKRANE TELESCOPABLE

