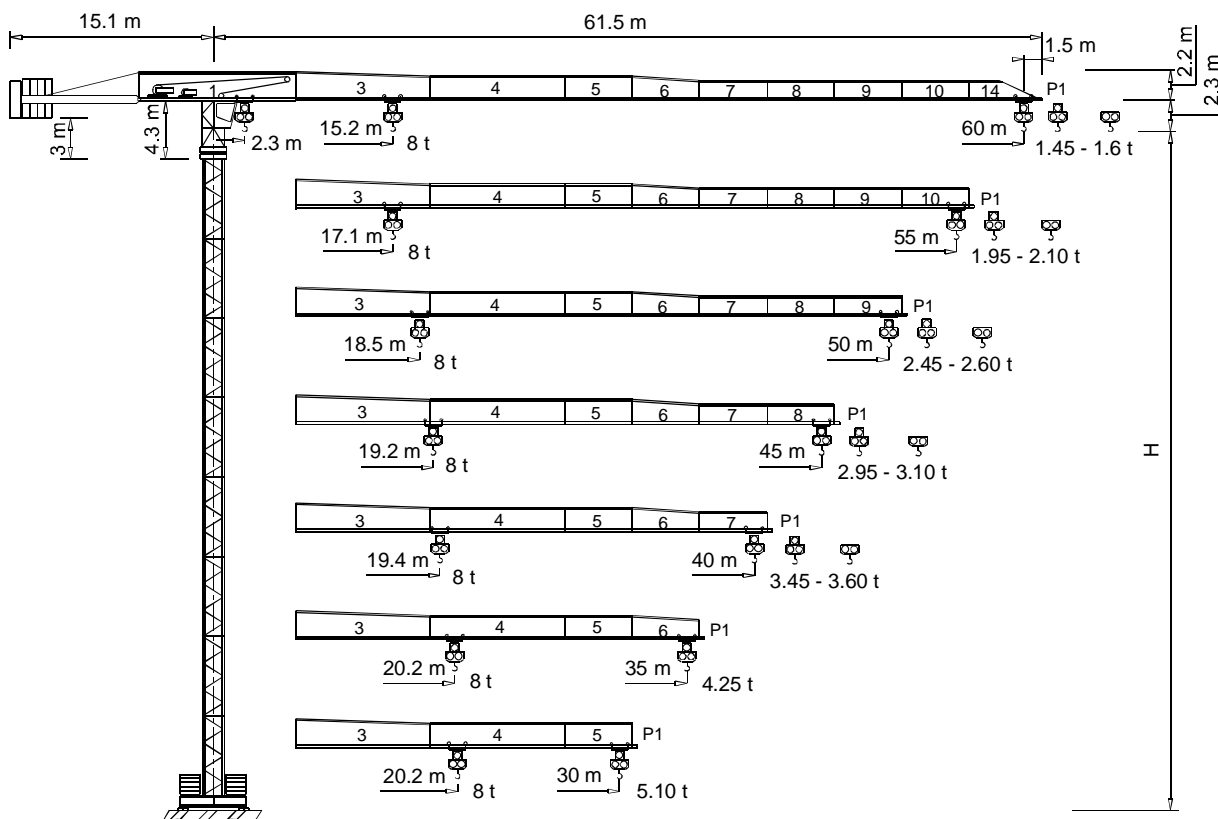


Gru a torre "Flat Top"

"Flat Top" Tower Crane • Grue à tour "Flat Top"
 "Flat Top" Turmdrehkran • Grua torre "Flat Top"



CE FEM 1.001 A3
(A2 )

THE **ULTIMATE CRANE**™

Dati illustrativi non impegnativi
 Con riserva di modifica senza preavviso

Specifications and data not binding
 Subject to modification without notice

Données techniques seulement indicatives
 Modifications réservées sans préavis

Angaben und Beschreibung unverbindlich
 Änderungen vorbehalten ohne weitere Mitteilung

Dibujos y datos sin compromiso
 Modificaciones reservadas sin preaviso

UTE.DOC.REV.002 09_2002

"CITY" CTT 141-8 TS



CTT 141-8

Diagramma di portata
Load Diagram

I
GB

Curbes de charges
Lastkurven

F
D

Curvas de cargas

E

| | | CTT 141-8 | | | | | | | | | | | |
|-----|-----------|-----------|----|------|------|------|------|------|------|------|------|------|--|
| | | m | | | | | | | | | | | |
| | | 10 | 15 | 20 | 25 | 30 | 35 | 40 | 45 | 50 | 55 | 60 | |
| 4 t | - 28.36 m | 4 | 4 | 4 | 4 | 3.75 | 3.13 | 2.67 | 2.31 | 2.02 | 1.79 | 1.6 | |
| 4 t | - 27.61 m | 4 | 4 | 4 | 4 | 3.62 | 2.99 | 2.53 | 2.17 | 1.88 | 1.64 | 1.45 | |
| 8 t | - 15.22 m | 8 | 8 | 5.85 | 4.5 | 3.62 | 2.99 | 2.53 | 2.17 | 1.88 | 1.64 | 1.45 | |
| 4 t | - 32.06 m | 4 | 4 | 4 | 4 | 4 | 3.61 | 3.09 | 2.69 | 2.36 | 2.1 | | |
| 4 t | - 31.16 m | 4 | 4 | 4 | 4 | 4 | 3.48 | 2.95 | 2.54 | 2.22 | 1.95 | | |
| 8 t | - 17.14 m | 8 | 8 | 6.71 | 5.19 | 4.18 | 3.48 | 2.95 | 2.54 | 2.22 | 1.95 | | |
| 4 t | - 34.66 m | 4 | 4 | 4 | 4 | 4 | 3.96 | 3.39 | 2.95 | 2.6 | | | |
| 4 t | - 33.64 m | 4 | 4 | 4 | 4 | 4 | 3.81 | 3.24 | 2.8 | 2.45 | | | |
| 8 t | - 18.47 m | 8 | 8 | 7.31 | 5.66 | 4.58 | 3.81 | 3.24 | 2.8 | 2.45 | | | |
| 4 t | - 36.14 m | 4 | 4 | 4 | 4 | 4 | 4 | 3.56 | 3.1 | | | | |
| 4 t | - 35.04 m | 4 | 4 | 4 | 4 | 4 | 4 | 3.41 | 2.95 | | | | |
| 8 t | - 19.23 m | 8 | 8 | 7.65 | 5.93 | 4.8 | 4.01 | 3.41 | 2.95 | | | | |
| 4 t | - 36.51 m | 4 | 4 | 4 | 4 | 4 | 4 | 3.6 | | | | | |
| 4 t | - 35.37 m | 4 | 4 | 4 | 4 | 4 | 4 | 3.45 | | | | | |
| 8 t | - 19.4 m | 8 | 4 | 7.73 | 6 | 4.86 | 4.05 | 3.45 | | | | | |
| 4 t | - 35 m | 4 | 4 | 4 | 4 | 4 | 4 | | | | | | |
| 8 t | - 20.19 m | 8 | 8 | 8 | 6.28 | 5.09 | 4.25 | | | | | | |
| 4 t | - 30 m | 4 | 4 | 4 | 4 | 4 | | | | | | | |
| 8 t | - 20.22 m | 8 | 8 | 8.1 | 6.29 | 5.1 | | | | | | | |

Altre installazioni
Other configurations

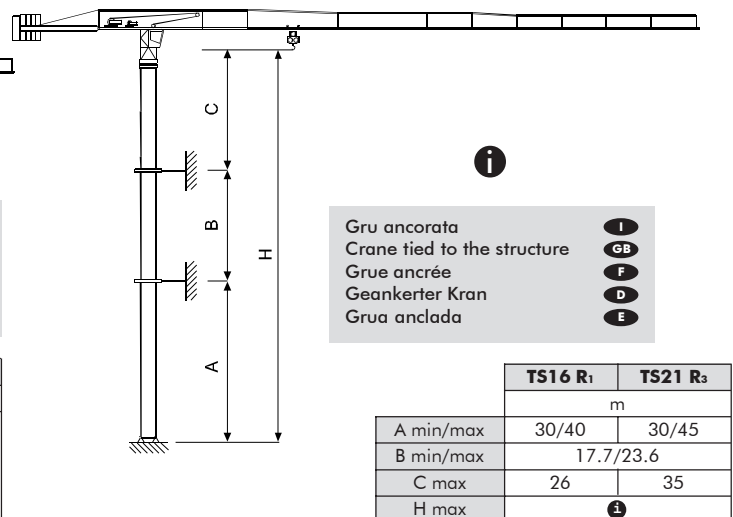
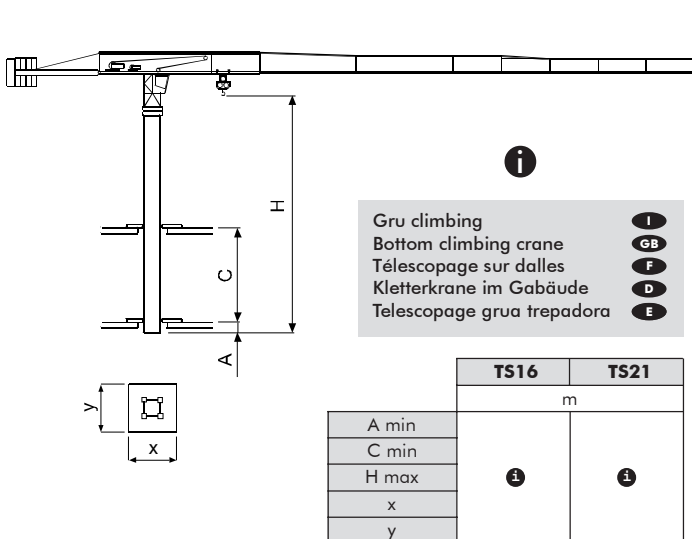
I
GB

Autres implantations
Aufstellungsmöglichkeiten

F
D

Otras implantaciones

E





CTT 141-8

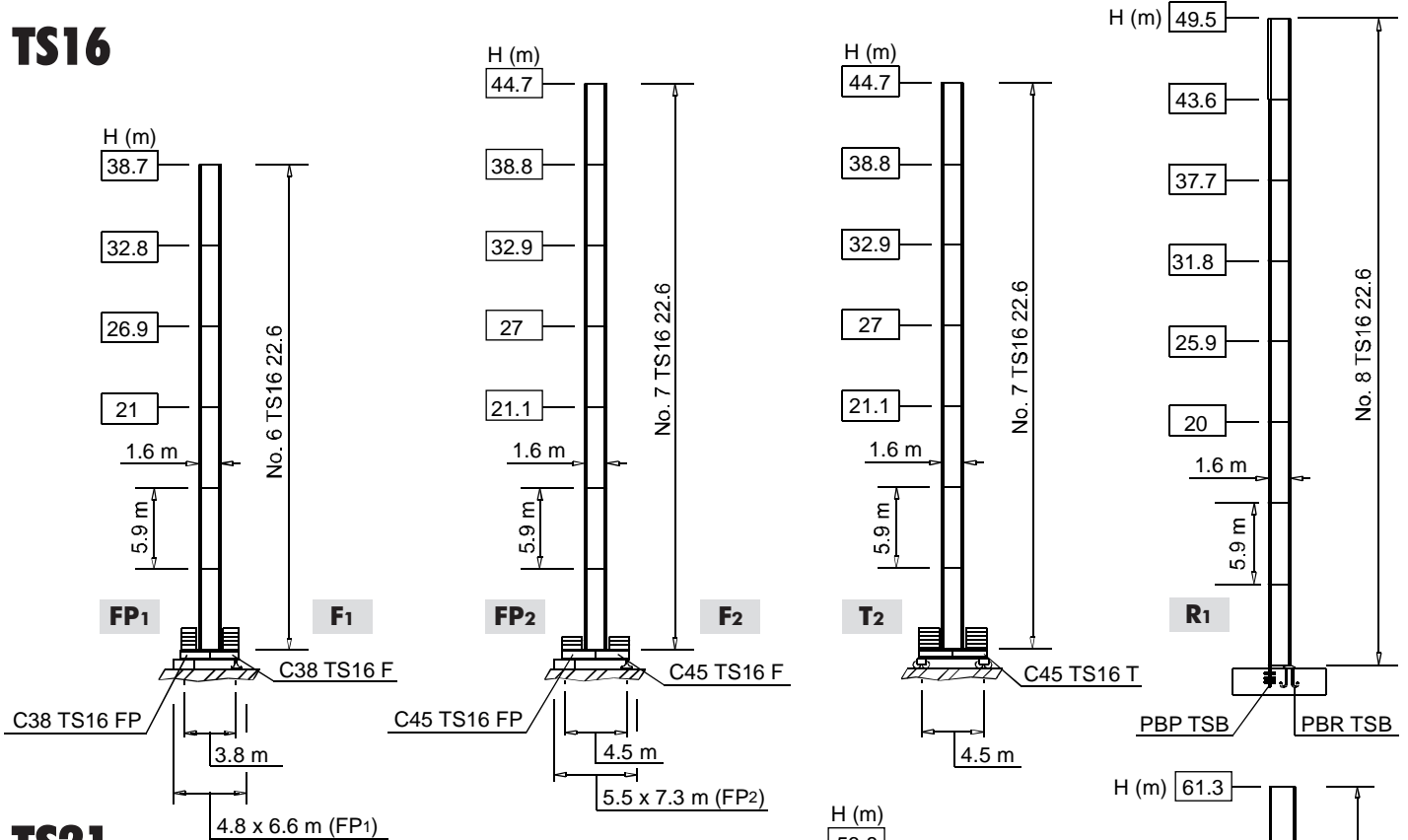
| | | | | | |
|-------------------|-----------------------|-----------------|----------------------|---------------|----------|
| Torre Mast | I GB | Mât Turm | F D | Mástil | E |
|-------------------|-----------------------|-----------------|----------------------|---------------|----------|

I Le prolunghe TS sono disponibili in lunghezza 11.8 m, 5.9 m, 2.95 m.
GB The available lengths for the TS tower sections are 11.8 m, 5.9 m, 2.95 m.

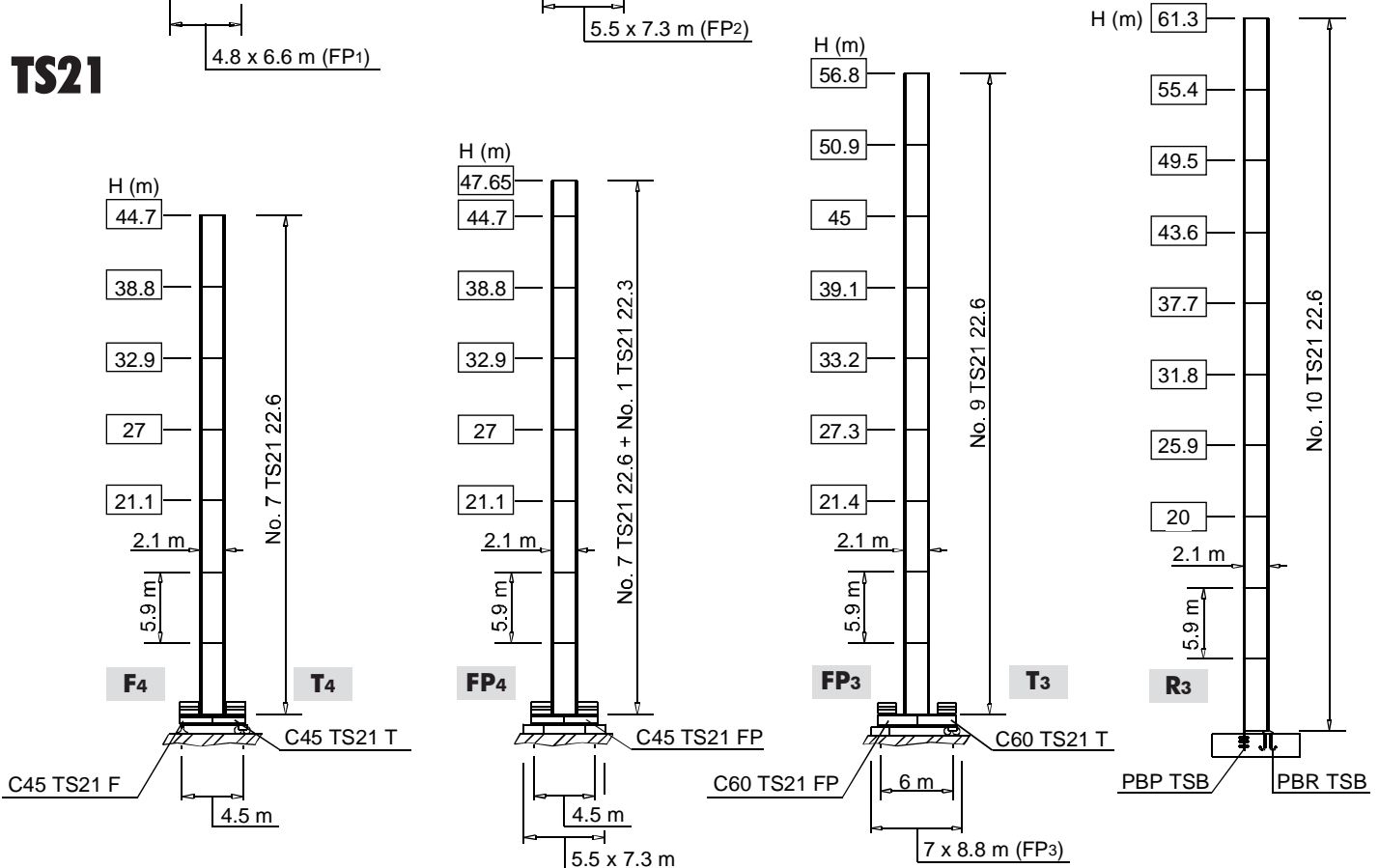
F Les éléments de mât TS sont disponibles en longueur 11.8 m, 5.9 m, 2.95 m.
D Die Turmschüsse TS sind mit Längen 11.8 m, 5.9 m, 2.95 m verfügbar.

E Los tramos de torre TS son disponibles en las medidas de largo 11.8 m, 5.9 m, 2.95 m.

TS16



TS21





CTT 141-8

Meccanismi
Mechanisms



Mécanismes
Antriebe



Mecanismos



| | | | |
|--|-----------|----------|-------------------------------|
| | | | |
| | 24 APC 40 | 65 * kVA | 400 V - 50 Hz |
| | 30 AFC 40 | 70 * kVA | 400 V - 50 Hz / 460 V - 60 Hz |
| | | | CE 87/405 |

* Gru senza traslazione / Crane without travelling equipment / Grue sans translation / Krane ohne Schienenfahren / Grúa sin traslación

| | | m/min | ↑ | kW | | | | | |
|--|---------------------|-----------|---------|------|----|-------|---|----|------------------------|
| | 24 APC 40 | | 5 | 4 | 24 | 278 m | | | |
| | | | 29 | 4 | | | | | |
| | | | 58 | 2 | | | | | |
| | 30 AFC 40 (VARIANT) | | | 2.5 | | | 8 | 30 | 278 m 350 m (LEBUS) |
| | | | | 14.5 | | | 8 | | |
| | | | | 29 | | | 4 | | |
| | | | 0 ⇒ 3 | 4 | | | | | |
| | | | 3 ⇒ 10 | 4 | | | | | |
| | | | 10 ⇒ 41 | 4 | | | | | |
| | | | 41 ⇒ 66 | 2.38 | | | | | |
| | | 66 ⇒ 82 | 1.86 | | | | | | |
| | | 0 ⇒ 1.5 | 8 | | | | | | |
| | | 1.5 ⇒ 5 | 8 | | | | | | |
| | | 5 ⇒ 20.5 | 8 | | | | | | |
| | | 20.5 ⇒ 33 | 4.76 | | | | | | |
| | | 33 ⇒ 41 | 3.72 | | | | | | |

| | | | |
|--|-------------------|------------------------------------------|-----------|
| | DVF 3 5 (VARIANT) | 0 ⇒ 6 ⇒ 32 ⇒ 64 m/min | 5 kW |
| | SSR 2 2 65 | 0.7 r.p.m. (50 Hz) 0.84 r.p.m. (60 Hz) | 2 × 65 Nm |
| | ▲ TAD 2RP 2M4 | 0 - 24 m/min | 2 × 4 kW |
| | ● TAD 2RG 4M3 | | 4 × 3 kW |
| | | | |

| | ▲ | ● |
|--------------------------------|------------|--------|
| | Max. H [m] | |
| T ₂ -T ₄ | 38.8 | > 38.8 |
| T ₃ | 39.1 | > 39.1 |

| | | | | | | | | | | |
|--|--------------------------------|--|--------------------------|--|------------------------------------|--|------------------------------------------|--|-----------------------------------|--|
| | Sollevamento | | Hoisting | | Levage | | Heben | | Elevación | |
| | Traslazione carrello | | Trolleying | | Distribution | | Katzfahren | | Distribución | |
| | Rotazione | | Slewing | | Orientation | | Schwenken | | Orientación | |
| | Traslazione | | Travelling | | Translation | | Schienenfahren | | Traslación | |
| | Direttiva sul livello acustico | | Directive on noise level | | Directive sur le niveau acoustique | | Richtlinie für den Schall-Leistungspegel | | Directiva sobre el nivel acustico | |
| | Consultateci | | Consult us | | Nous consulter | | Auf Anfrage | | Consultarnos | |
| | Potenza totale richiesta | | Power requirements | | Puissance totale nécessaire | | Geforderte Stromstärke | | Potencia necesaria | |
| | Alimentazione | | Power supply | | Alimentation | | Stromversorgung | | Alimentación | |

Gru Comedil s.r.l.

A Terex Company

Via S. Egidio 42/A, 33074 Fontanafredda (PN) - Italy
Tel. (+39) 0434 567 311 - Telefax (+39) 0434 998631
Internet e-mail: info@comedil.com
Internet home page: <http://www.comedil.com>

Divisione Automontanti

Via Alessandrina, 25 - 20095 Cusano Milanino (MI) - Italy
Tel. (+39) 02 613 16011 - Telefax (+39) 02 613 16034
Internet e-mail: info.CBR@comedil.com

