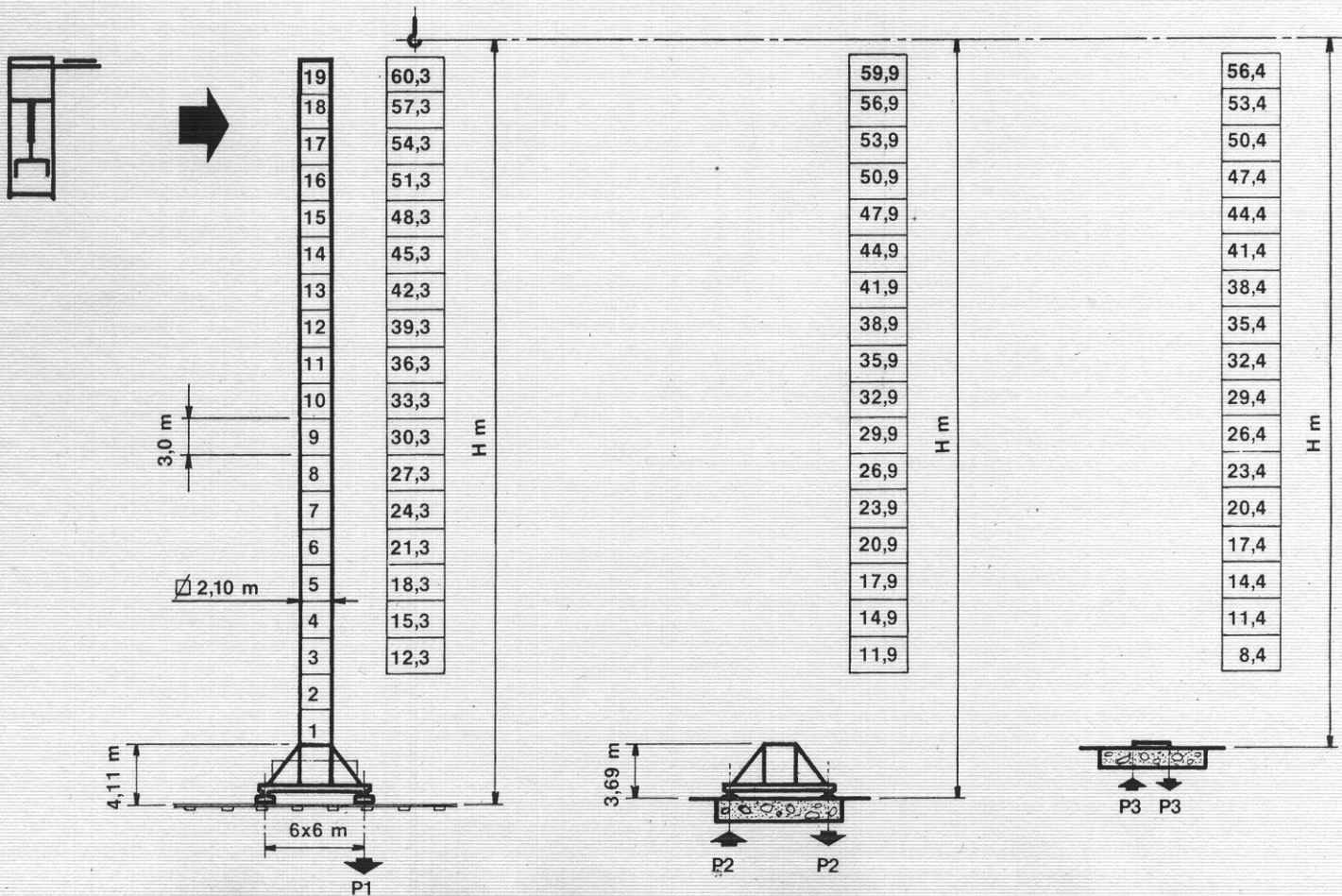
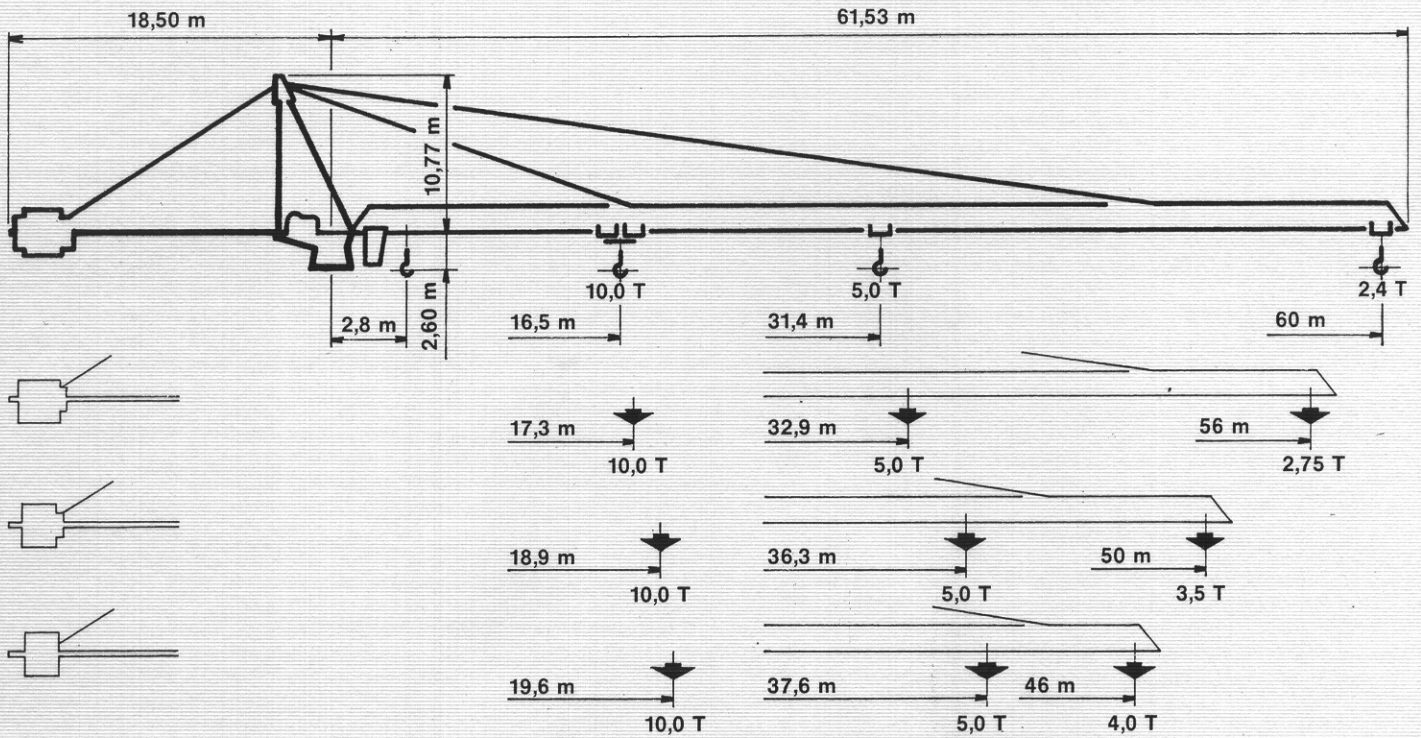
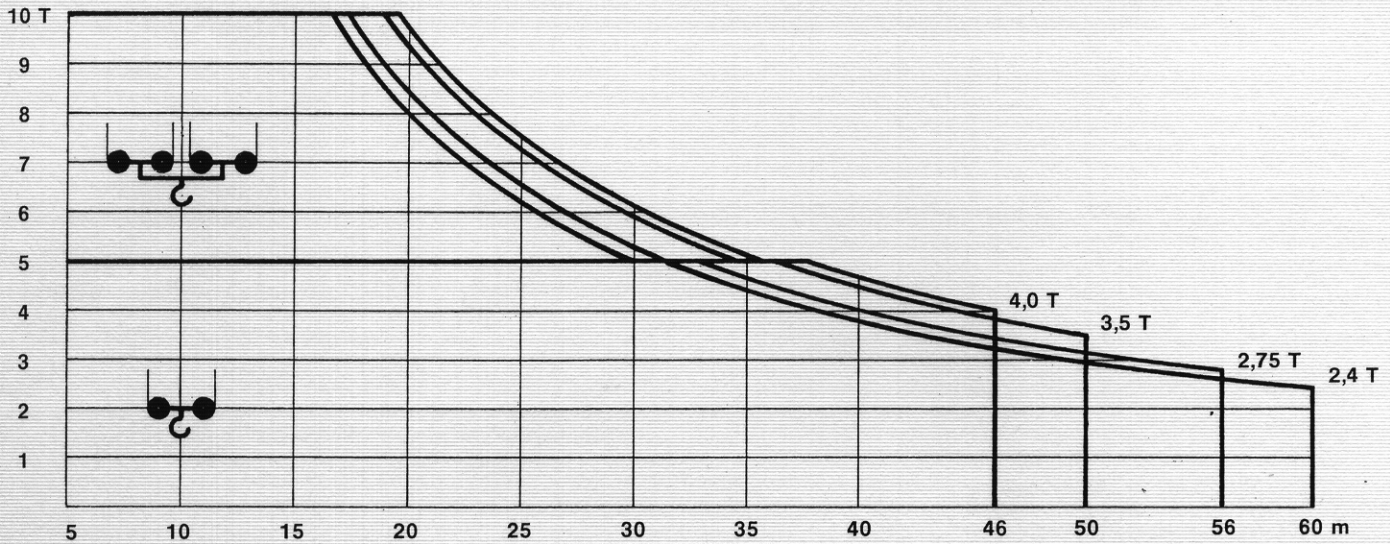


Modello ER 180

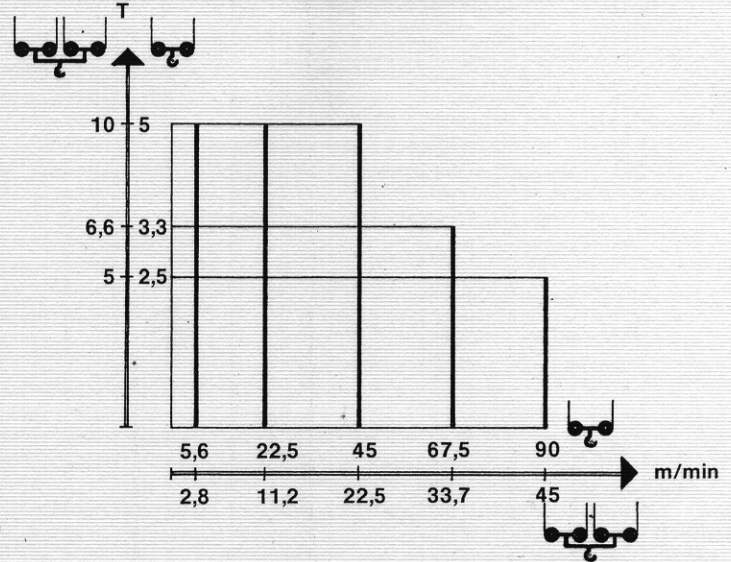
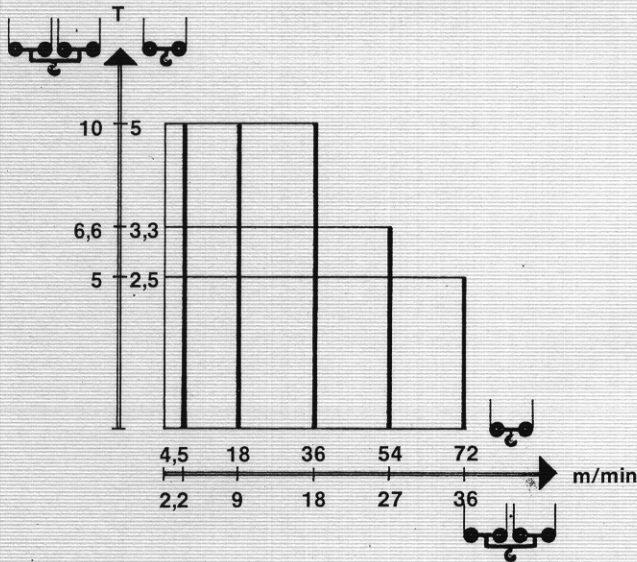
7





50 HP

66 HP



	27/54 m/min	2,5/4	CV HP ch PS	Potenza totale installata Installed power (66 HP): 72 KW Puissance totale moteur (50 HP): 60 KW Gesamtmotorenleistung	
				Peso della gru senza zavorre (H max. s.g.) Total weight of crane without ballast (max. H.) 52 T Poids de construction sans lests (max. H. s.c.) Gesamtgewicht (max. Hubhöhe)	
	giri/min r.p.m. r.p.m. U.p.m. 0 ÷ 0,7	3 x 4	CV HP ch PS	Tipo di rotaia Rail type 46,3 Kg/m Tipe de rail Schienentyp	
				Trazione massima Max. tensile force Max. force de traction Max. Zugkraft P 1 P 2 P 3 — 26,0 T 100,4 T	